



N *Hispanic*
C **CHAMBER**
W *OF Commerce*

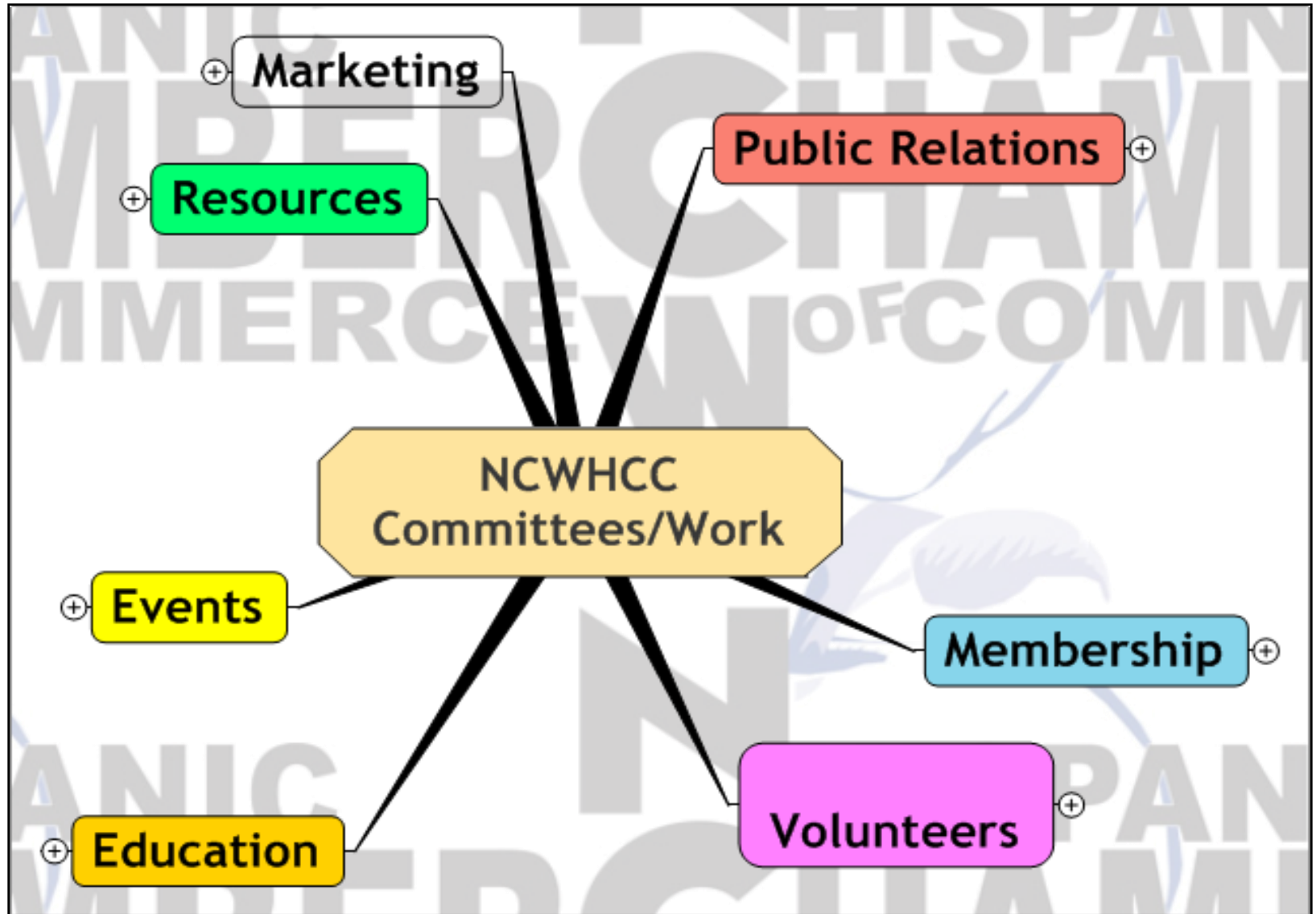
Thursday 21st, 2016
PRESENTATION

NCW Hispanic Chamber of Commerce Mission Statement / Goals

Support Growth and Development of
Hispanic Businesses and community

Within the next 3 years grow into a 300 member regional entity providing education, marketing opportunities, service discounts, community involvement and a voice to and for the Hispanic community and businesses in North Central Washington.

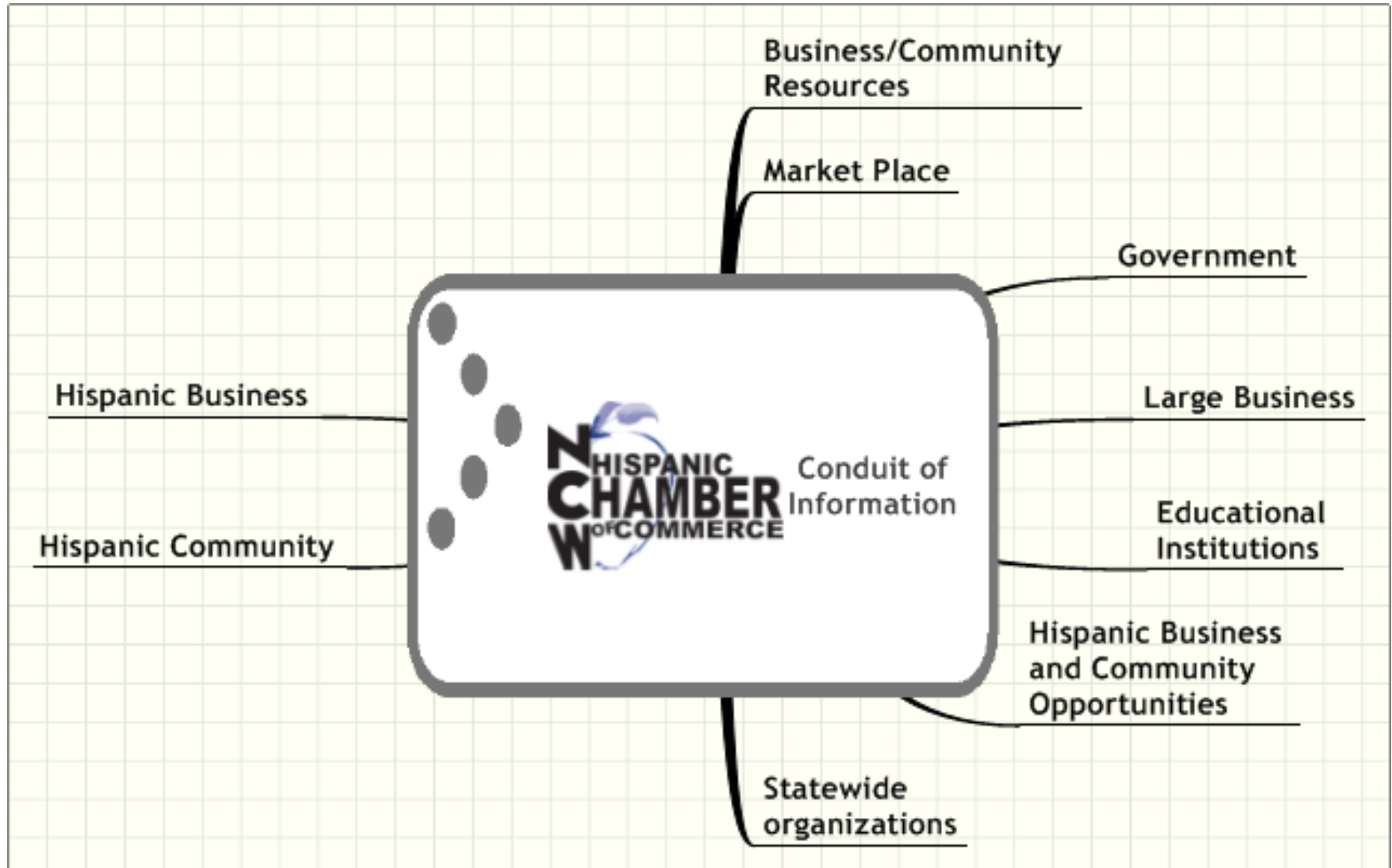
NCWHCC Committees/Work



Strategies:

- Build member trust through cultural understanding, personal touch, and confidence.
- Integrate community cultures through events, memberships, sponsorships, networking, and involving more Latino community members.
- Generate funding through memberships, sponsorships, events and advertising.
- We will value diversity, respect all opinions and strive toward consensus in decision making.
- Be a communications hub for education, training, career opportunities, community involvement and business development.
- Active partnerships with the Wenatchee Chamber of Commerce

Conduit of Information



Recent Accomplishments

2015 Success Stories

- Annual NCWHCC Scholarship Banquet – Scholarships awarded in the total amount of \$20,500 this year for deserving Hispanic students, with several sponsorships supporting the event.
- Spanish Workshops, Business owner and individuals prior to starting.
- NCW Empowerment Fund, a non profit organization to help the chamber
- First Annual Business Expo
- Partnership with other local organizations: Wenatchee Valley Chamber, Score, Gwata and Small business development center,
- Partnerships with private business: Weinstein Beverages,
- Partnership with regional organizations: NCW Economic Development District.

Plans for the Future

- Leadership and Mentorship for our Hispanic Community by:
 - Promoting higher education for our next generation
 - Promoting education and integration into our existing business culture for success by our Hispanic community business owners
 - Continue partnerships with various organizations and educational entities, such as:
SCORE – Wenatchee Valley College-GWATA-Wenatchee Valley Chamber of Commerce-NCW Economic Development District – Weinstein-Small Business Development Center

How Can We Work Together in Support ?

- Funding for Scholarships/Higher Education
- Assist/help fund and support by Promoting Business Seminars for Minority/Hispanic Business Owners
- A Voice in our State Legislature for Issues pertaining to the Eastern Washington Hispanic Communities
- Acknowledgment by our State Government Representatives of the changing Labor Market in Eastern Washington and need for placing the building blocks for a successful cultural shift.

Questions/Discussion